

*Palinurus tumidus*, sp. nov.

Carapace beaked, much swollen, armed with very blunt spines, or rather spine-knobs, some directed forward, others, again, standing nearly vertical; a double row of small, stout, blunt spines, standing nearly vertical, runs along the posterior edge of the carapace. Beak stout, round, and curved upwards. Supra-orbital spines stout, compressed, turned upwards. Antennæ spines stout, somewhat triangular in shape, and also turned upwards. Superior antennæ less than the total length of the animal, peduncle armed on its upper and outer surface with stout spines. Inferior antennæ smooth, longer than peduncle of superior.

Anterior legs very stout, inferior margin of second joint armed with a row of five or six spines; third joint with a very stout spine at the anterior and also at the posterior extremity, the anterior twice the size of the posterior, also a stout triangular spine on the superior distal extremity; fifth joint with a row of six spines on the superior internal angle, the largest and posterior one being directed backwards to meet the anterior spine of the third joint, a row of three small blunt spines on the inferior internal angle. Superior margin of the distal extremity of the third joint of the last four pairs of legs armed with a spine.

Abdomen very coarsely granulated and punctated. Tail, especially the telson, armed with small spines; telson rounded at the extremity.

Anterior margin of each segment of the abdomen produced into a very prominent spine, backed by three or four teeth.

Whole animal destitute of hair, with the exception of the pedipalps, and the inferior surface of the terminal joint of each pair of legs.

Colour, reddish brown, tinged in many places with yellow.

Length, 24 inches.

Distinguished from *P. hugelii* by its much larger size, by the beak, supra-orbital and antennæ spines being turned upwards, by the telson being less triangular, and rounded instead of scaped.

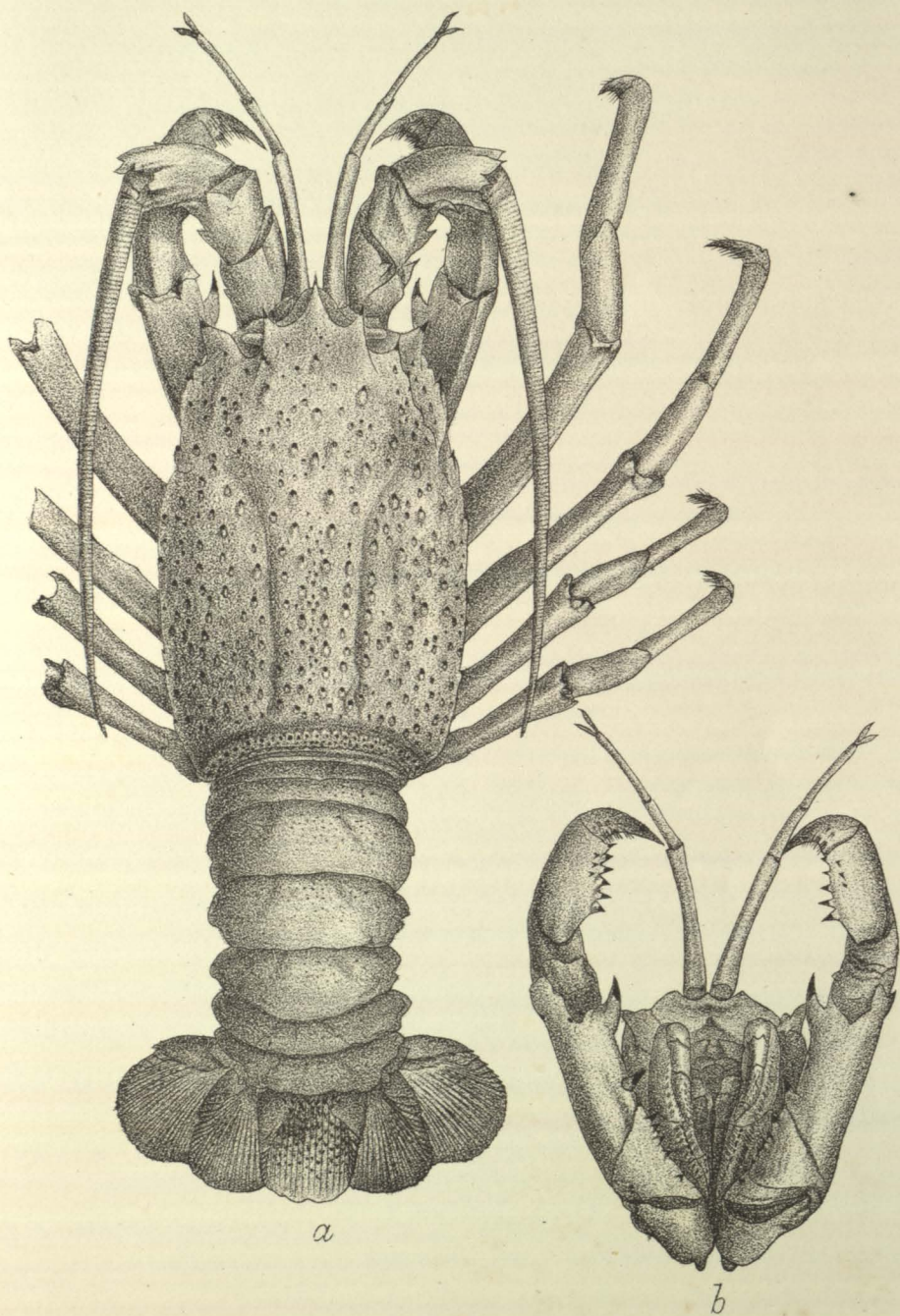
PLATE XI. represents *Palinurus tumidus*. a. Dorsal view. b. Inferior surface of anterior leg, showing armature.

ART. XLV.—Description of a new Species of Lizard of the Genus *Naultinus*.

By W. L. BULLER, C.M.G., Sc.D., F.R.S.

[Read before the Wellington Philosophical Society, 10th January, 1880.]

THE lizard described in this paper was obtained in August last by Mr. Joseph Annabell while engaged on a Government survey in the wooded country of the Wanganui district. It is an interesting form, belonging to a well known



*PALINURUS TUMIDUS* sp. nov.

J.B. lith.

