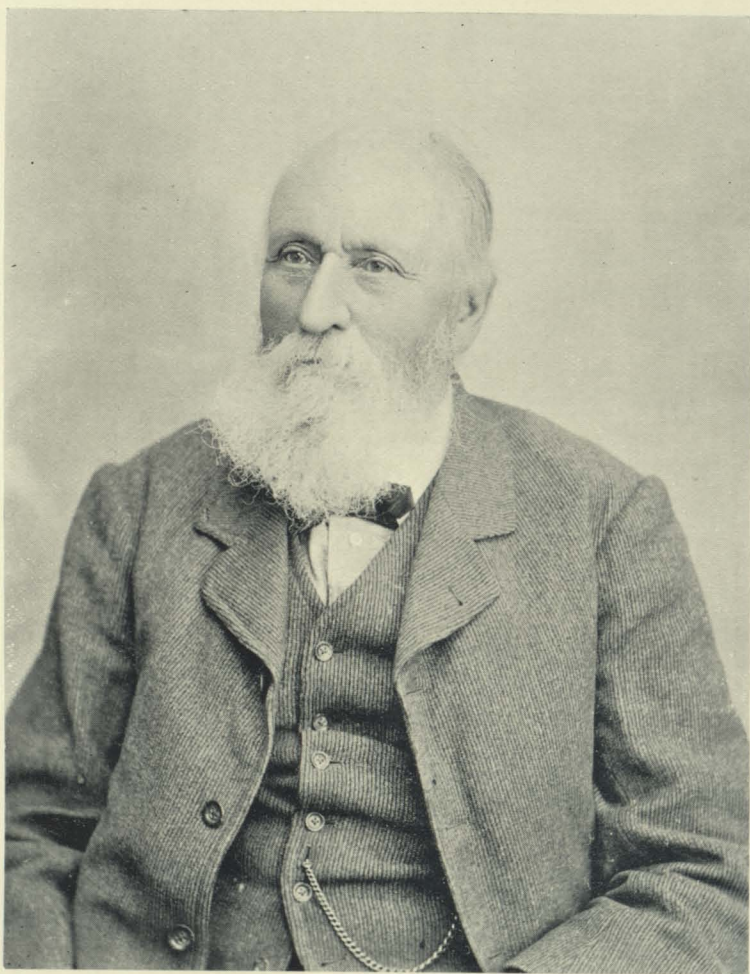


IN MEMORIAM.

Thomas Mason (1818-1903), a native of England, arrived in Wellington in 1841, and settled at Taita, in the Hutt Valley. He had been Chairman of the Hutt County Council, and was at one time a member of the House of Representatives for the Hutt District. As a horticulturist he had a wide reputation, having the finest private botanical collection in the colony. He was for over twenty years a member of the Board of Governors of the Institute, and was Chairman of the Board at the time of his death. He has contributed papers on horticultural subjects which have been published in the Transactions, and the current volume contains his last contribution.



THOMAS MASON.

See p. xx.