

A New Fly, Diptera Anthomyidae, from New Zealand.

By J. T. SALMON, Entomologist, Dominion Museum,
Wellington.

[Read before the Wellington Philosophical Society, July 23, 1937; received by the Editor, July 31, 1937; issued separately, December, 1937.]

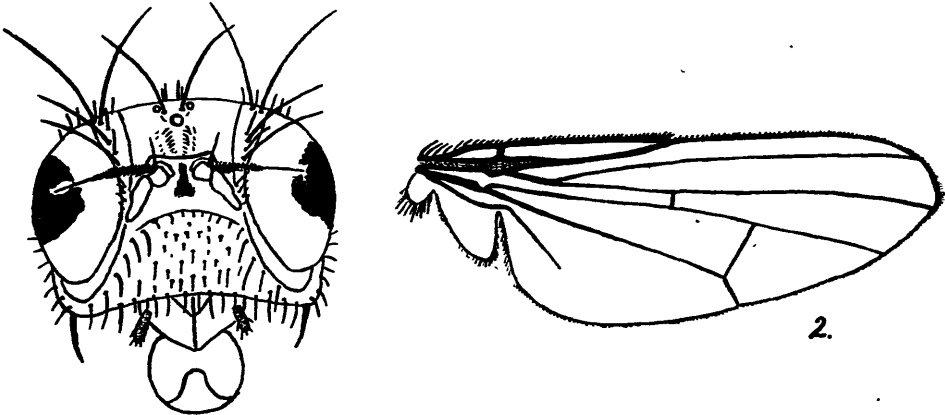
SOME nine specimens of a dipterous fly were sent to the Dominion Museum in April, 1935, by Mr. E. C. Edmundson, of Napier, who stated that for the past week these flies had been appearing in swarms throughout the business area of that town.

The flies fall into the Family *Anthomyidae* and are closely related to the *Mydaeinae*, a sub-family not hitherto reported from this country. They cannot, however, be definitely placed in any existing genus, and I propose to erect a new genus for their reception.

MYDAEZEALANDIA gen. nov.

Type: *Mydaezealandia glauca* sp. nov.

The general characters of the head and wings are shown in the accompanying figures 1 and 2. The frontal suture is distinct, the vibrissal angle is not developed. Vertical bristles well developed, equal: post-vertical, two pairs, one pair behind the other and all very small: ocellar large and curved outwards and forwards: frontal very small and difficult to distinguish: fronto-orbitals very strong, outwardly curved and reinforced on each side by from eight to twelve small bristles extending in a row down to the level of the antennae. Lower part of the face more or less thickly covered by medium-sized bristles. Palpi present. Arista plumose at base, but becoming bare at about half its length. Second antennal segment carrying a prominent dorsal bristle. Thoracic bristles: dorso-centrals four on each side: humeral two: post-humeral absent: notopleural two: pre-sutural, supra-alar, inter-alar and post-alar one each: mesopleural one very large and four smaller: sternopleural one more or less centrally placed on sternopleuron. Propleural, metapleural and hypopleural all absent. Two posterior scutellar bristles long and wavy.



1
Mydaezealandia glauca gen. and sp. nov., FIG. 1—Diagrammatic view of head;
FIG. 2—Diagram of wing venation.

***Mydaezealandia glauca* gen. and sp. nov.**

Length 4-5 mm. Dark, metallic green on dorsal surface passing into a soft greenish or bluish-grey on the sides and ventral surface. Halteres very pale brown almost white. Wings clear but tinged with brown towards the base. Veins brown, anal vein does not reach the wing margin. Legs general colour greyish green with brownish tarsi and brown joints, thickly and evenly clothed with bristles and carrying a pair of prominent bristles at the base of each tarsal joint on the ventral surface. Cross measurement with wings outspread 10-11 mm. Vertex deep, metallic green, fronto-orbital regions brownish, genae yellowish-green antennae brown, eyes reddish with central black patches, abdomen more or less flattened and about equal in length to the head and thorax. Forward edge of costa strongly bristled especially towards the wing base. The squama carries a number of long white hairs arranged as a fringe around its border.